

FloEFD™ for Solid Edge®

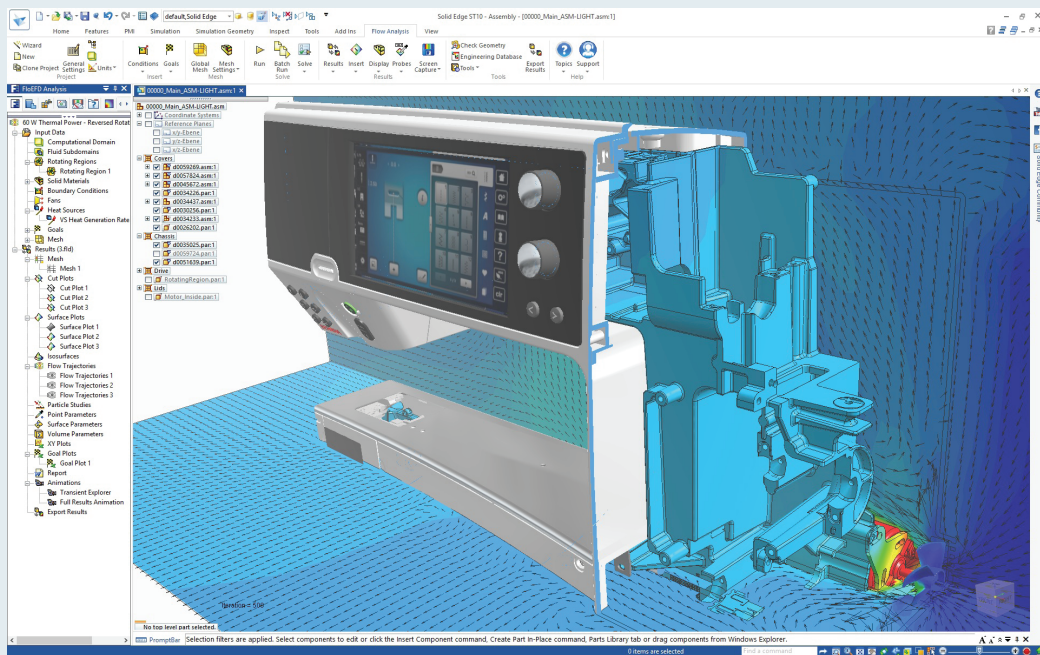
Fully CAD-Embedded Computational Fluid Dynamics (CFD) Software

FloEFD for Solid Edge is the only Computational Fluid Dynamics (CFD) analysis tool that is fully embedded in Solid Edge. It enables engineers to frontload simulation by moving CFD simulation early into the design process; thus, enabling design engineers to examine and evaluate design options earlier to obtain optimized product performance and reliability.

FloEFD features:

- An intuitive user experience – short learning curve
- Use of native Solid Edge CAD data – no translation or fluid body creation
- Automatic recognition of model change – geometry and simulation data are synchronized
- Fast automated mesher – fast and easy SmartCell™ meshing
- Unique solver – getting accurate results fast for highly complex geometry
- Powerful parametric study and design comparison functionality for easier what-if analysis

Due to ease-of-use, fast meshing and unique solver technology powered by incorporated analytical-empirical models, FloEFD allows for intensive use of simulation by a wide range of users at any design stage providing valuable insight into product behavior from the beginning of the design cycle.



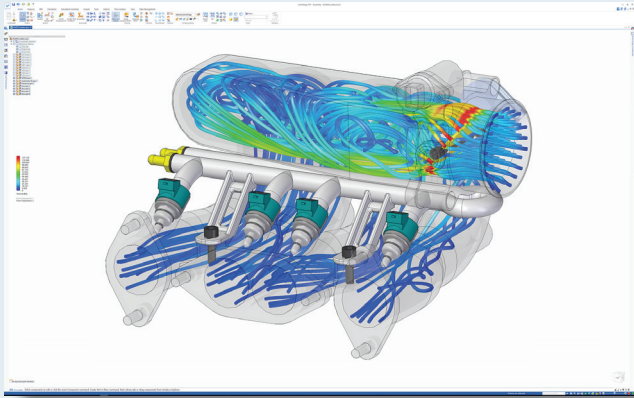
“We design and build Custom Automated Heat Seal Equipment, that uses a resistant wire element in the Sealing Process. These elements are beyond a simple wire; therefore, we need to make sure they perform as designed. We use FloEFD Analysis to optimize these elements, as well as the other components in the sealing head assemblies. It has become very instrumental in our business.”

Trlby Innovative, LLC

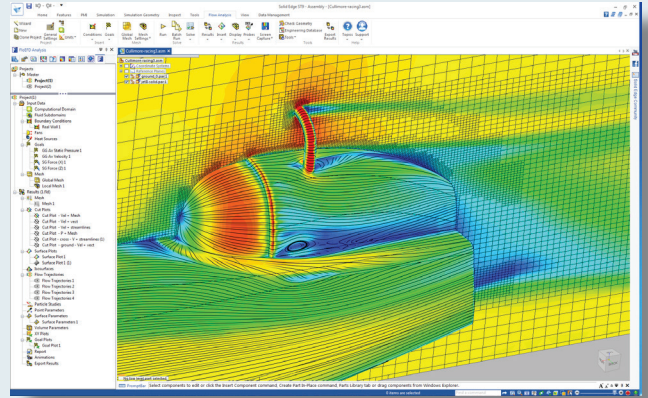
FloEFD™ for Solid Edge®

Fully CAD-Embedded Computational Fluid Dynamics (CFD) Software

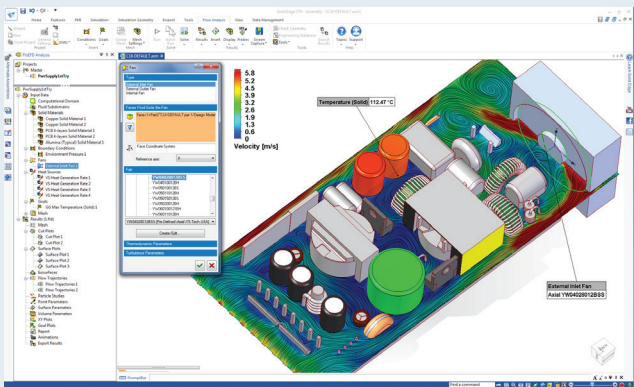
Tight CAD-Integrated CFD Simulation



Fast & Robust Automated Meshing Technology



Intuitive User Experience



Parametric Studies & Design Comparison

